



Lynx

Sentinel

Sex offender, crime & incident tracking



Overview

Lynx Sentinel™ software automatically plots, on a map or satellite image, locations of sex offenders, protected areas, crimes and incidents. This system puts time-critical information at your fingertips for quicker response to events. By knowing the location of protected areas, (e.g. schools, day care centers, bus stops) Lynx Sentinel™ can warn you when sex offenders violate protected areas. The reports are easy to read and save hundreds of hours of tedious hand searching and measuring. In addition, Lynx Sentinel™ provides end-users with location information about crimes and incidents such as traffic accidents, hazardous materials locations and others.

Key Benefits

Sex Offender Tracking

- Maps sex offender home, work, GPS and other locations
- Maps protected locations (hot spots), day cares, schools, etc.
- Manages sex offender check-in and reporting
- Provides numerous reports for the management of sex offenders
- Sentinel "Dashboard" gives you at a glance numbers of sex offenders, hot spots, notifications, confirmations, etc.
- Sends out notifications to hot spots & manages confirmations
- **Installed** with hot spot data and your own sex offender data

Crime, Incident and Hazardous Material Tracking

- Use the location maps for public or private presentations
- Maps crime scene locations
- Maps car accidents, incidents, house fires
- Maps warning areas, e.g. hazardous material sites, etc.
- Easily identifies areas with a high number of crimes, accidents or incidents
- Helps fire departments identify hazardous materials areas before they arrive on site

General Benefits

- Manage information associated with any type of crime
- Shows locations on a satellite map of your area
- Information can be easily shared over an internal network or internet
- Improve public relations with web based analysis of crimes, sex offenders and other important locations
- Easily create Search and Rescue map grid and view progress live
- Secure information with user accounts and passwords. Set your own levels of access to the data.
- Data can be shared by mobile devices, e.g. Blackberry, Smartphones, etc. using Google Maps

Ryte Byte, Inc.

**S4125A Rocky Point Road
Baraboo, WI 53913**

Phone: **(866) 356-6822 ex 1**

Fax: **(608) 356-0312**

Email:

sales@citydefender.com

Web:

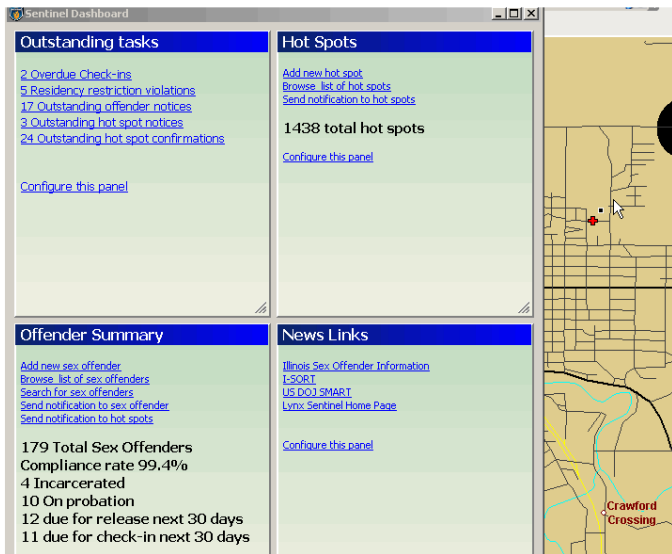
www.citydefender.com



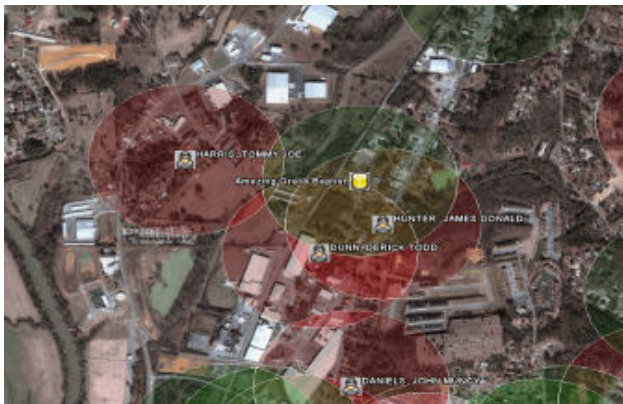
Lynx Sentinel™ saves you countless hours of manually measuring and plotting distances, printing and sending notification letters, as well as information tracking of crimes and other incident locations.

Ask us about newly available grants!

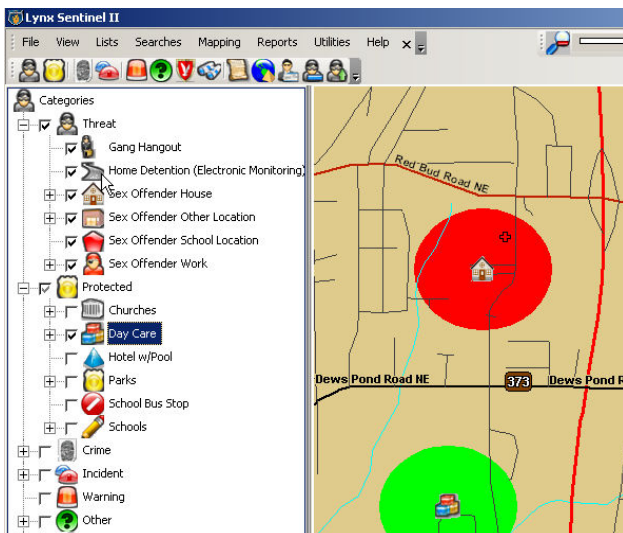
Lynx Sentinel™ was developed by a software company that has been in business for over 25 years, in cooperation with police departments and their own real-life, day-to-day knowledge. This combination has helped us create an affordable, yet powerful system that is quick to learn and simple to use. You won't waste any time getting the information you need.



Sentinel Dashboard shows all relevant information about the sex offenders you're managing.



Show satellite views of areas with locations



Easily identify proximity violations and warnings

Ryte Byte™, Lynx™ and Lynx Sentinel™ are trademarks of Ryte Byte, Inc.
Copyright 2009 - Ryte Byte, Inc.

System Requirements

Recommended (workstations)

- Windows 2000, NT 4, XP, Vista
- Intel Pentium II processor or higher
- 200 megabytes of free disk space
- 2 gigabytes disk space for mapping
- 128 megabytes of RAM

Minimum (workstations)

- Windows 2000
- 200 megabytes of free disk space
- 32 megabytes of RAM

Minimum (server)

- Windows 2003 Server, Novell, Linux

Additional Options

- Interface for your existing crime management system
- Workstation license for each additional workstation beyond the initial 3
- Document imaging

Features

- Unlimited records, sex offenders, protected areas, crimes, etc.
- User-defined warning areas, protected areas, threats, crimes and incidents
- User-defined editable queries
- Print out sex offender photo directories
- Print out sex offender ID cards
- State violation reports
- SQL based database for easy access
- User-defined reports using Crystal Reports
- Management of sex offenders, crimes, threats, car accidents, incidents, hazardous materials areas, user-defined warning and alert areas
- Enterprise Edition comes with 10-user license and internet access standard
- Advanced user security, i.e. allow a group of users to only view the data or allow a single user to only see certain fields with a data screen
- Email/text message support
- Live online or onsite technical support provided for installation, set up, training and maintenance
- Unlimited web updates for current version
- Document Imaging, i.e. scan and save document relating to any record.

Business Objects

Crystal Reports XI

MySQL

